

CSULA Senior Design Workshop



Noah Sager

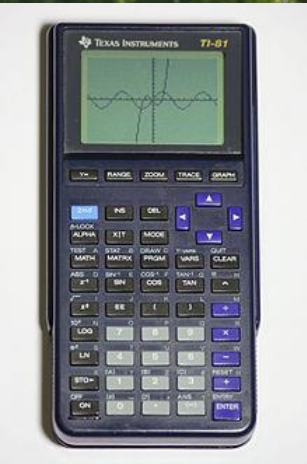
Product Engineer | ArcGIS API for JavaScript | Esri

@noashx

nsager@esri.com

The background is a solid dark blue color. Overlaid on this are several geometric elements: a faint, light blue grid of lines forming a pattern of triangles and hexagons across the entire page; and clusters of 3D cubes in various shades of blue (light blue, medium blue, and dark blue) located in the bottom-left and top-right corners, creating a sense of depth and modern design.

About Me



Bring On the Papers!
Esri UC Call for Papers Closes October 26

Do you have a GIS story to change the world? Can your insights...

"Go for it! You have everything to



The background is a dark blue field with a subtle, light blue grid of lines forming a pattern of triangles and hexagons. In the bottom-left and top-right corners, there are clusters of 3D cubes in various shades of blue, some appearing to float or be part of a larger structure. The text "Now To Business" is centered in the upper half of the image.

Now To Business



What is...

Geography?



Everything is related.

Things that are closer
are more related than
things that are farther
away.



What is...

Geography?
GIS?



Geographic Information System (GIS) lets us visualize, question, analyze, and interpret data to understand relationships, patterns, and trends. GIS benefits organizations of all sizes and in almost every industry.



GIS is a tool/science/technology that collects, analyzes, and visualizes spatial relationships on a computer*.



What is...

Geography?

GIS?

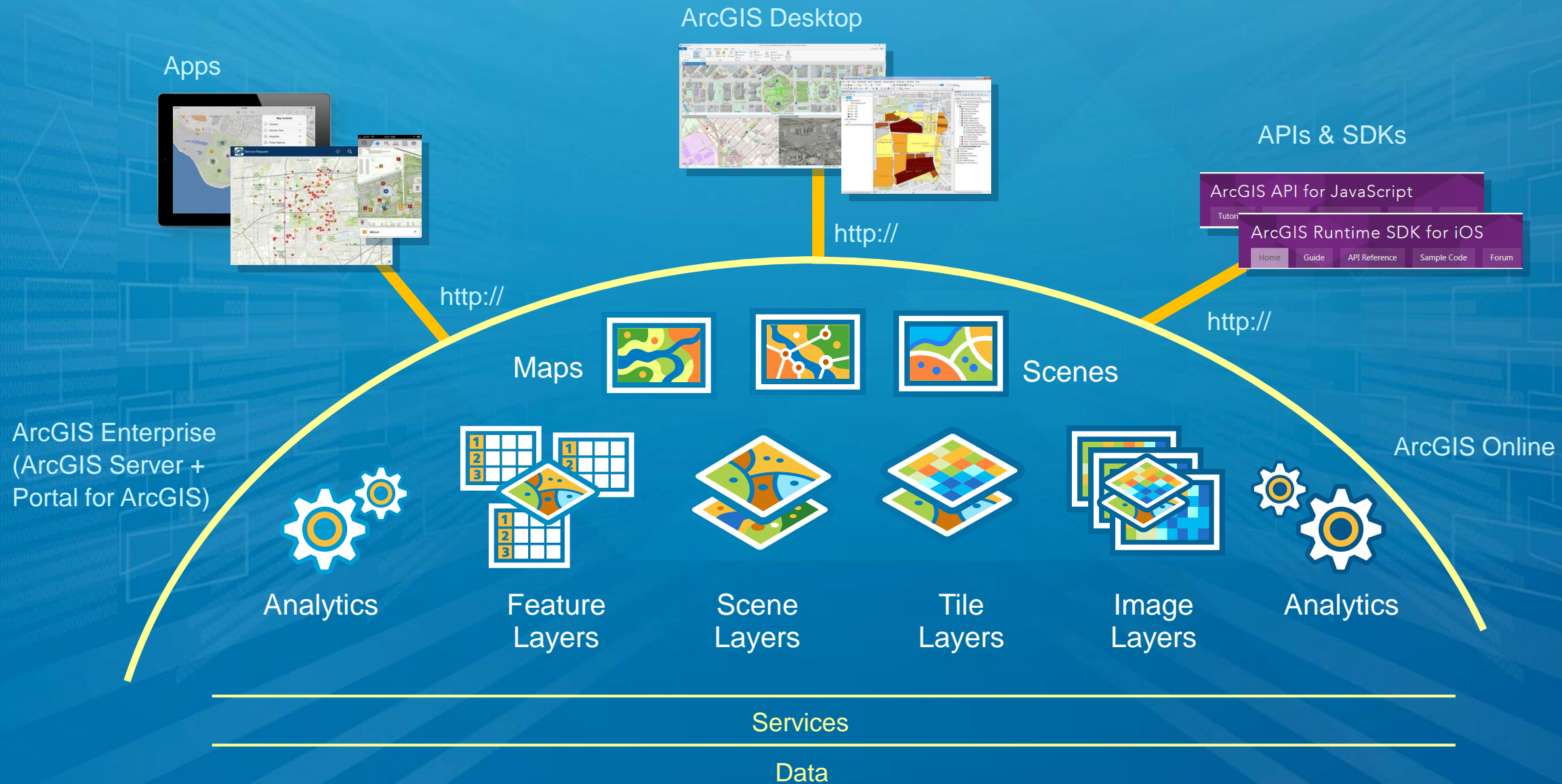
ArcGIS?



ArcGIS is an Esri GIS solution.

Desktop (Windows, Mac, Linux)
Mobile (Android, iOS, Windows)
Web (Chrome, IE, Opera, etc.)

The ArcGIS Platform





What is...

Geography?

GIS?

ArcGIS?

GIS Programming?



GIS Programming is a kickbutt way to solve geospatial problems in a creative and totally relevant/unique workflow.

<https://developers.arcgis.com>

ArcGIS for Developers

 Dashboard 

[Get Started](#)

[Documentation](#)

[Pricing](#)


[Support](#)



Noah



A complete mapping
and analytics
platform for
developers

 [View Dashboard](#)

[Start Developing Your App](#)



The background is a dark blue field with a faint, light blue grid of lines forming a pattern of triangles and hexagons. In the corners, there are clusters of 3D cubes in various shades of blue, some appearing to float or be part of a larger structure.

So what?

Faulty trail app leaves tourist stranded overnight on a cliff face

North Shore News

By **Brent Richter** - October 9, 2018



Share on Facebook



Tweet on Twitter



North Shore Rescue says a tourist using a faulty trail map app on his phone was led astray into danger Monday evening.

The hiker, a 37-year-old man who was visiting from the U.K., was using the Maps.me app to navigate his way off Crown Mountain.





GATOR

Find address or place



Legend

- Sub-Tropical Depression
- Sub-Tropical Storm
- Tropical Depression
- Tropical Storm
- Hurricane

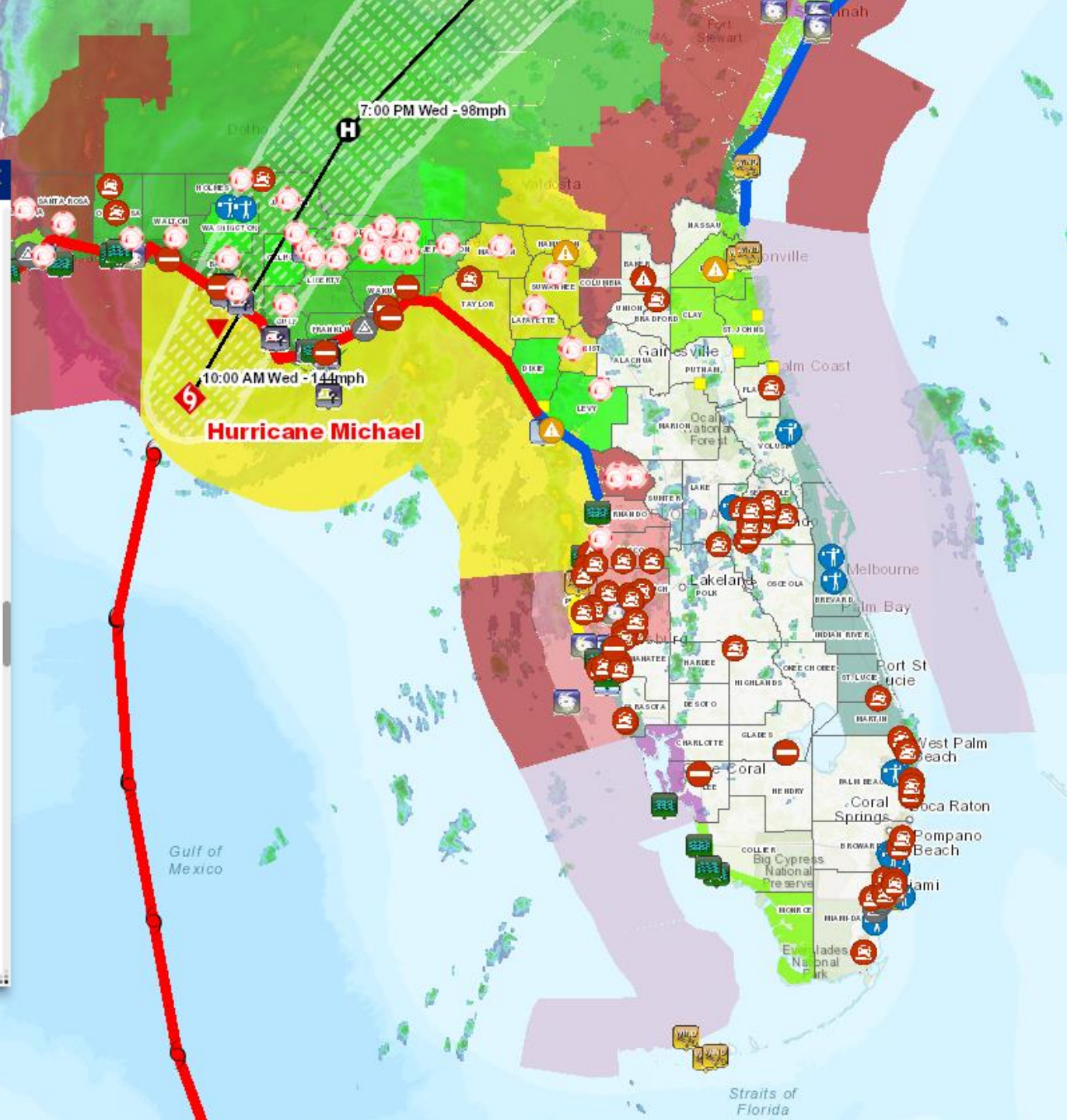
Past Track

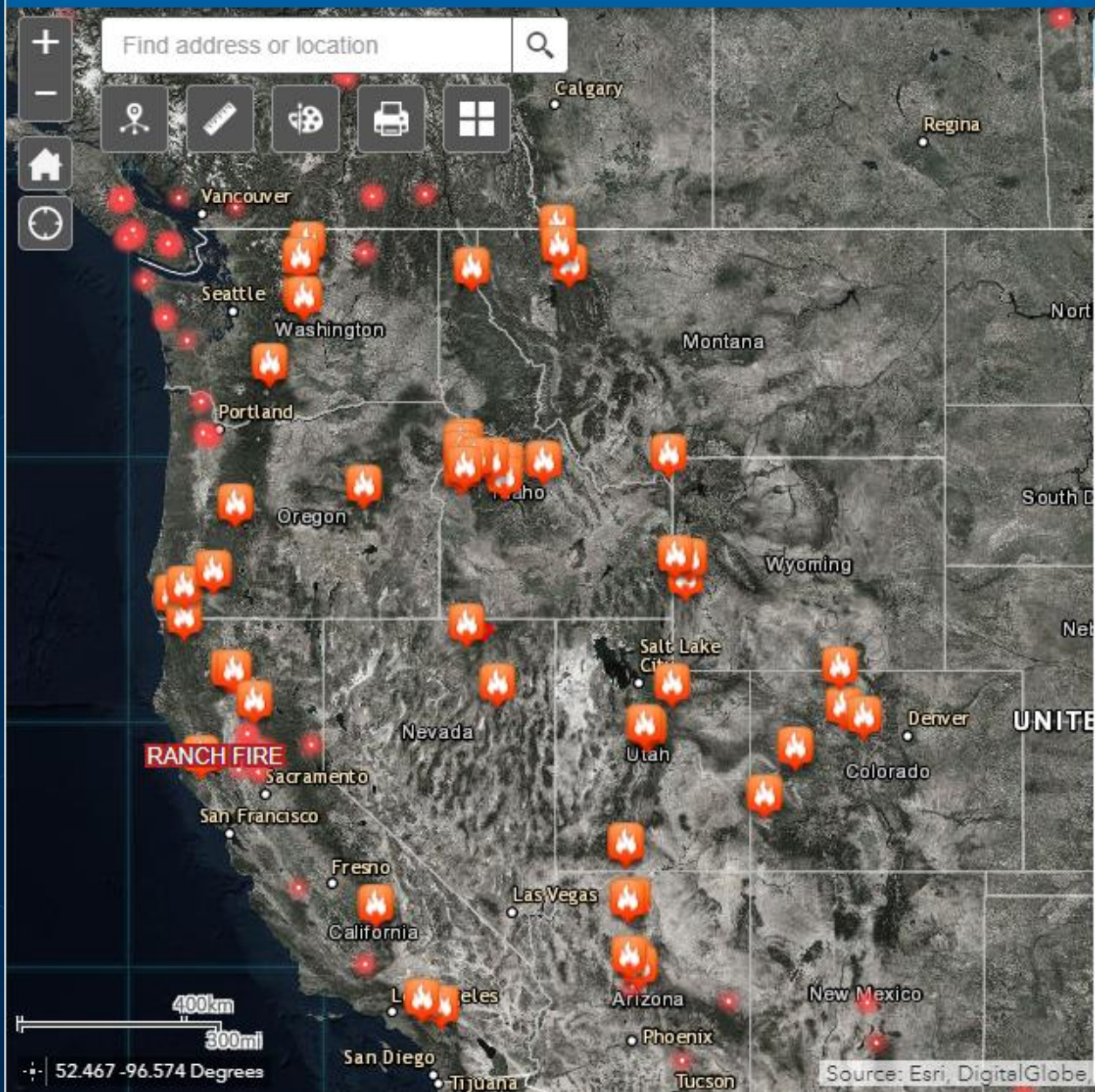
- Post-Tropical Cyclone
- Wave
- Disturbance
- Low
- Sub-Tropical Depression
- Sub-Tropical Storm
- Tropical Depression
- Tropical Storm
- Hurricane

River Conditions

Currently Flooding (Florida)

- Major Flooding
- Moderate Flooding
- Minor Flooding
- Near Flood Stage
- Normal
- Low Threshold





About this application

⌵
✕

About the map +

Map legend -

News Observations

Active fire report

Active perimeter

NWS Watches Warnings - Severe Events

- 911 Telephone Outage
- Administrative Message
- Air Quality Alert
- Air Stagnation Advisory
- Arroyo and Small Stream Flood Advisory
- Ashfall Advisory
- Ashfall Warning
- Avalanche Advisory



ArcGIS API for JavaScript

<https://developers.arcgis.com/javascript>

ArcGIS for Developers

Dashboard

Get Started

Documentation

Pricing

Support

Search

Noah

ArcGIS Web API / JavaScript API / 4.9

ArcGIS API for JavaScript

HomeGuideAPI ReferenceSample CodeSupport

Build 2D and 3D web apps!

The 4.x series of the ArcGIS API for JavaScript integrates 2D and 3D into a single, easy-to-use, powerful mapping API. Create 3D maps as easily as 2D maps, seamlessly integrate your web GIS and build influential data-driven visualizations.

Learn about 4.9

```
// Reference the JavaScript API from our CDN and you are ready to get started:  
<link rel="stylesheet" href="https://js.arcgis.com/4.9/esri/css/main.css">  
<script src="https://js.arcgis.com/4.9/"></script>
```

Need to build a full-featured 2D web app with capabilities such as editing and support for all existing layer types?

Go to 3.26

Choosing a version ▶

Get the API

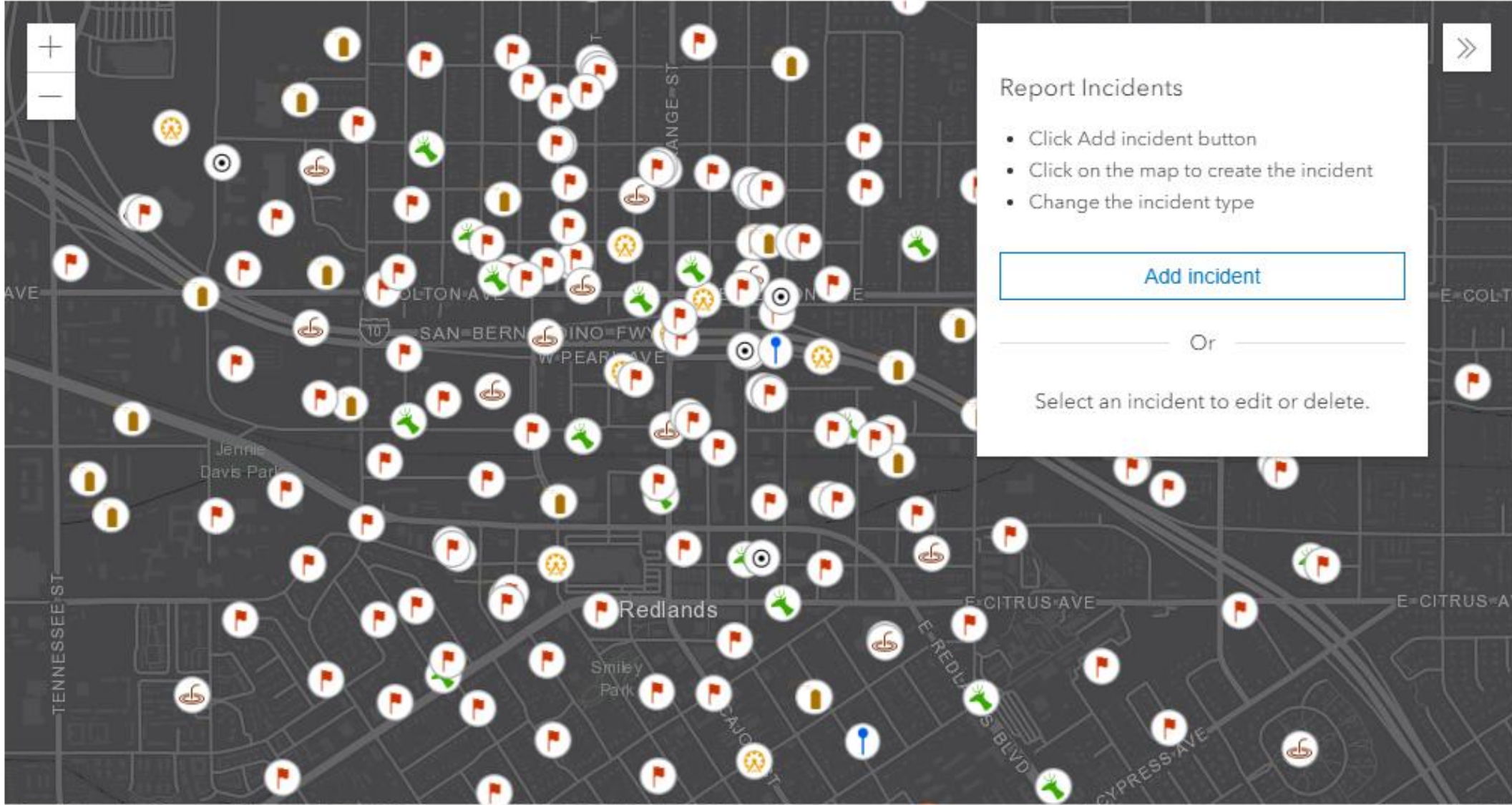
Release notes

FAQ

System requirements

View samples

Update FeatureLayer using applyEdits()



The screenshot displays a map interface for reporting incidents. The map shows a grid of streets in Redlands, California, with numerous red flag markers indicating reported incidents. A dialog box titled "Report Incidents" is overlaid on the right side of the map. The dialog contains a list of instructions: "Click Add incident button", "Click on the map to create the incident", and "Change the incident type". Below the instructions is a button labeled "Add incident". Underneath the button is the text "Or" followed by the instruction "Select an incident to edit or delete." The map interface includes a zoom control in the top left corner and a close button in the top right corner of the dialog box. The map shows labels for "Redlands", "Smiley Park", "Jennie Davis Park", and various streets including "Tennessee St", "San Bern", "W Pearl Ave", "E Citrus Ave", and "E Redlands Blvd".

Report Incidents

- Click Add incident button
- Click on the map to create the incident
- Change the incident type

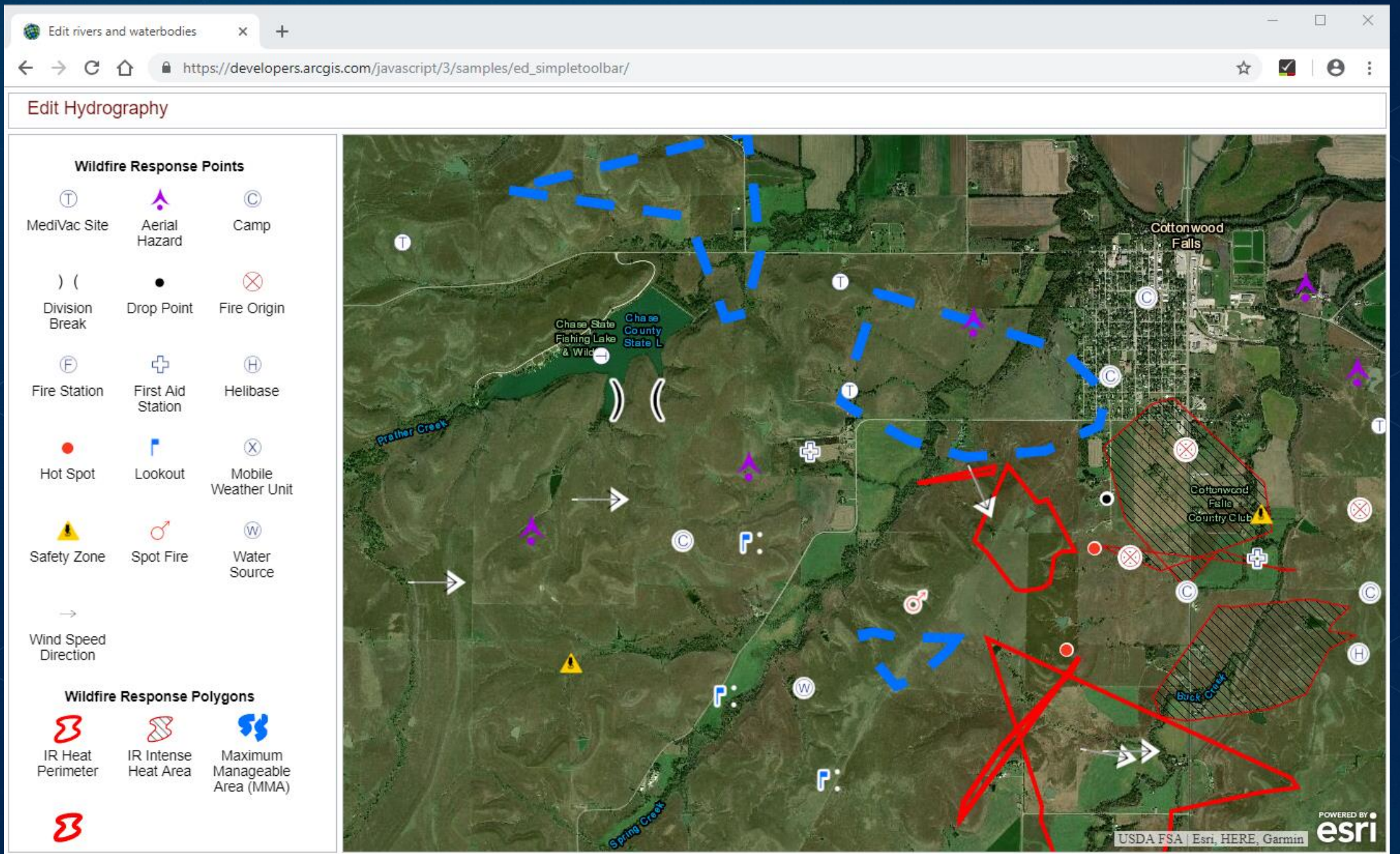
Add incident

Or

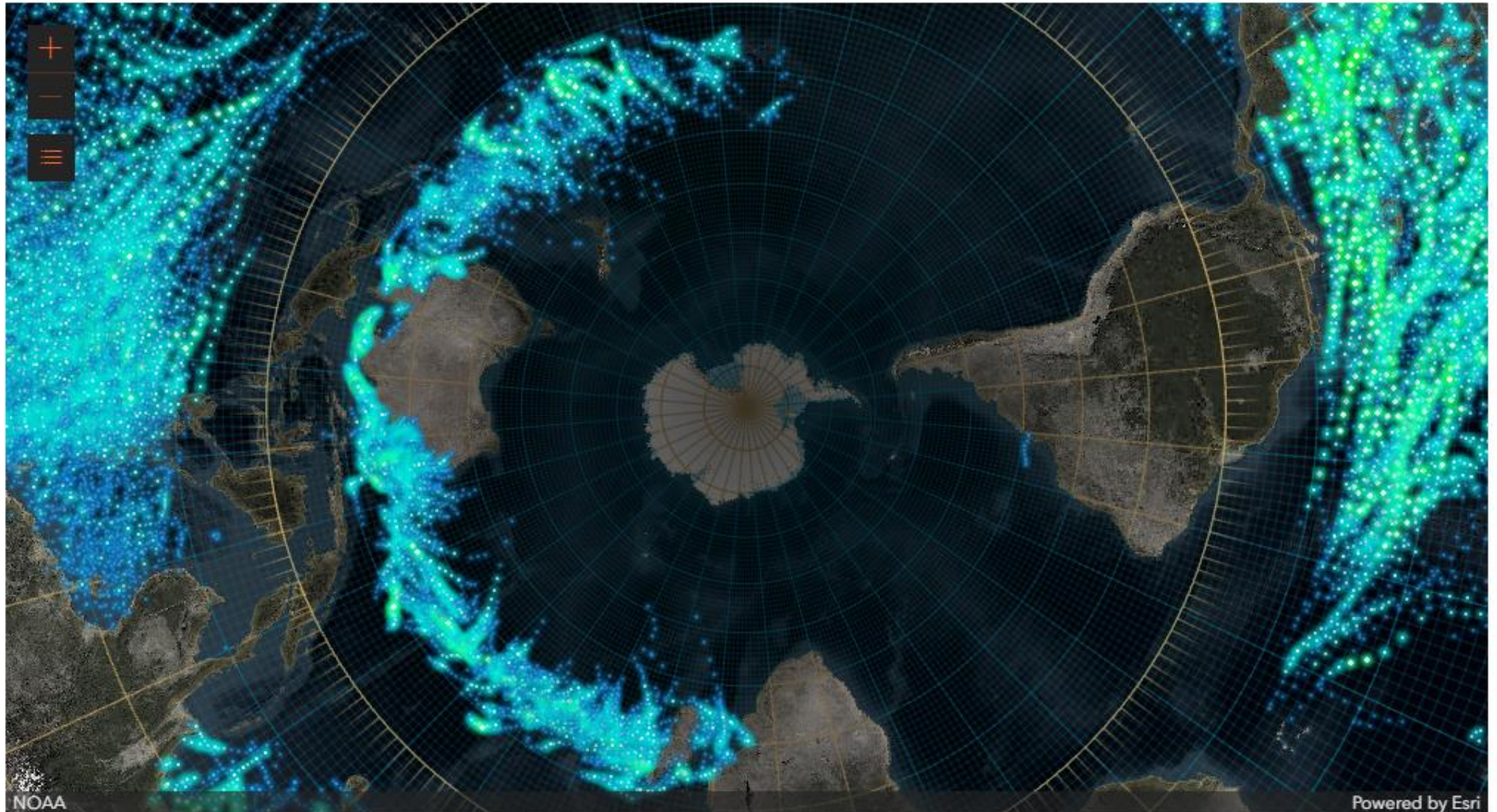
Select an incident to edit or delete.

City of Riverside, County of Riverside, Esri, HERE, Garmin, INCREMENT P, NG, USGS | Esri, HERE

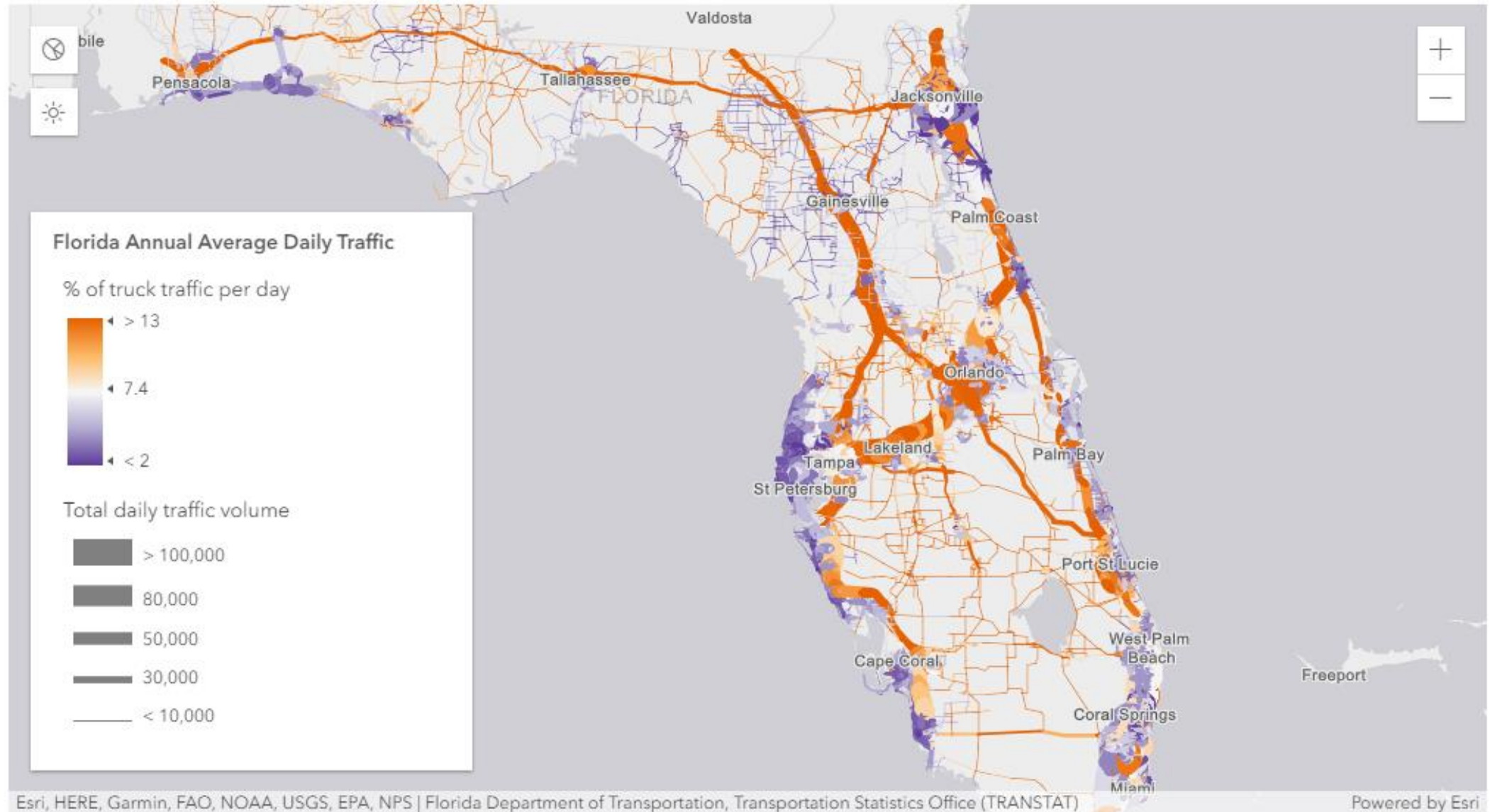
Powered by Esri



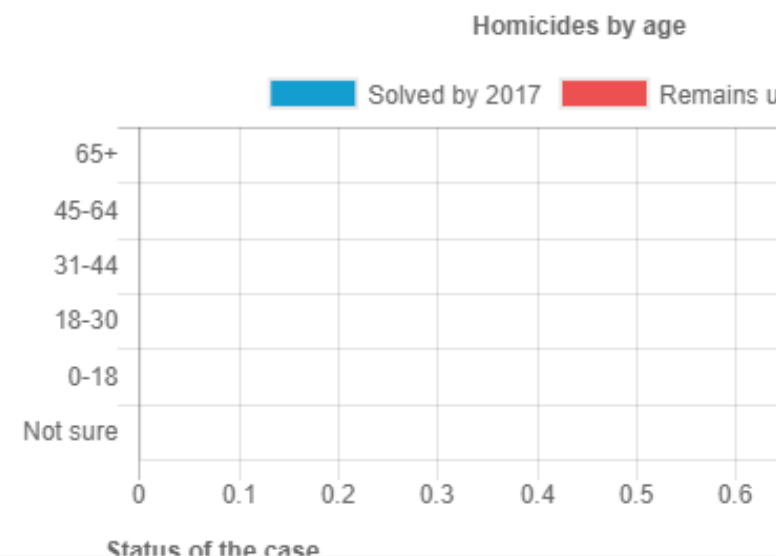
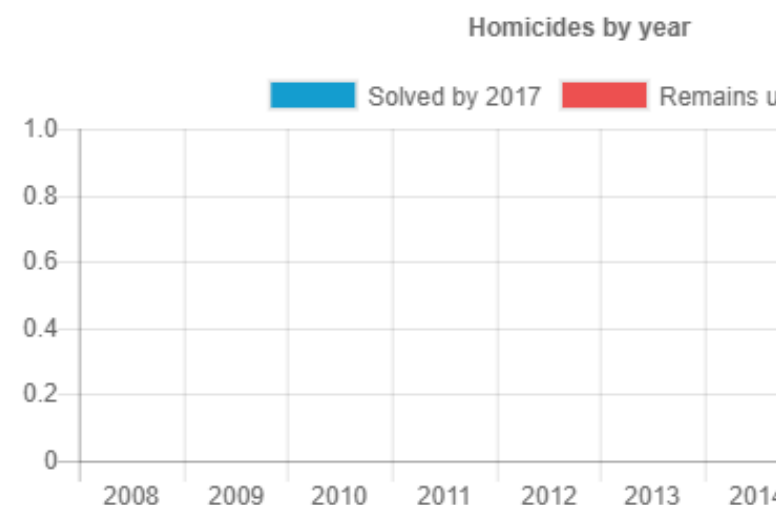
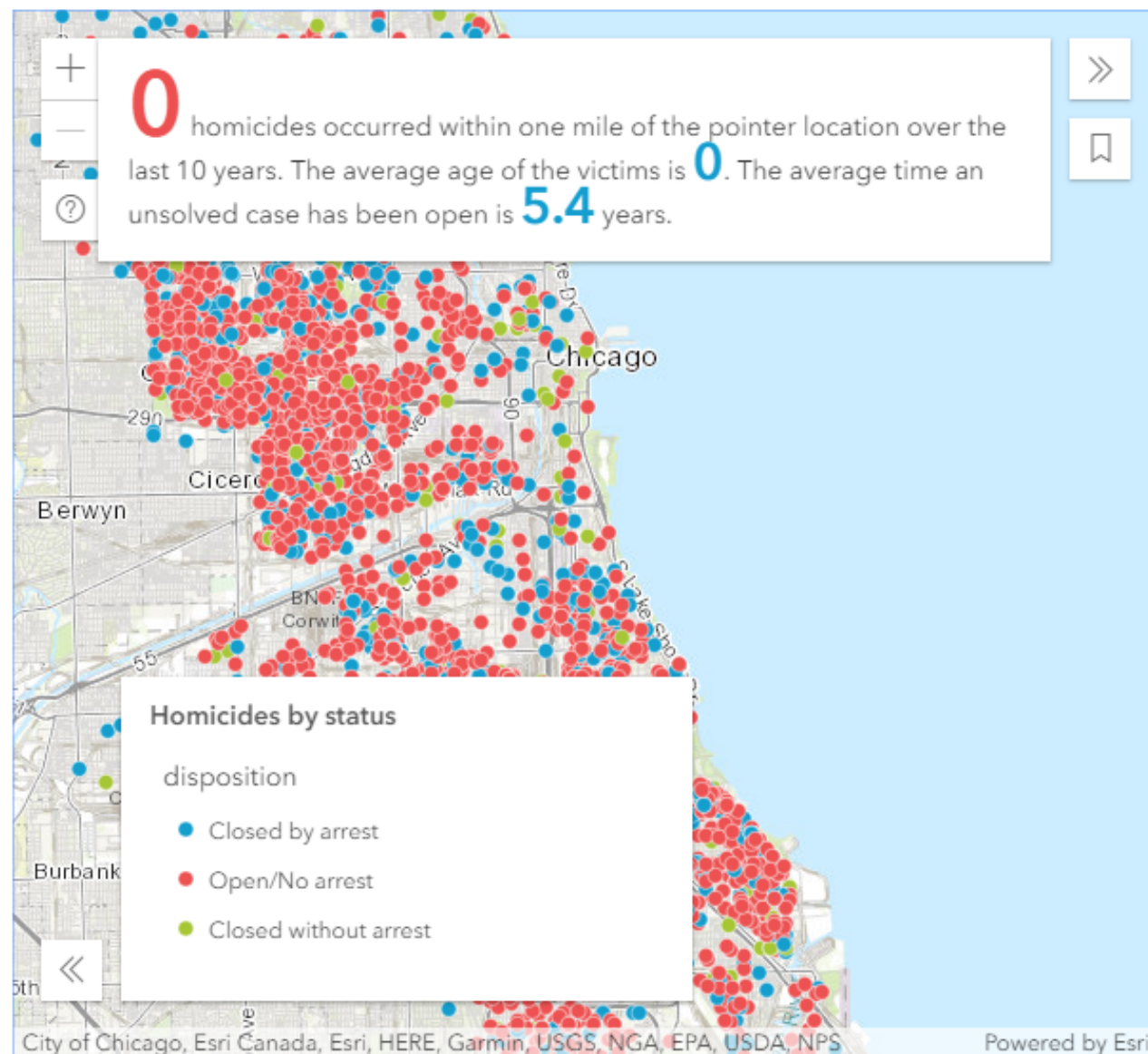
CSVLayer - Project points on the fly



Multivariate data exploration



Query statistics client-side by distance



Esri Leaflet

Tutorials

Plugins

Examples

API Reference

Download

View on GitHub

Esri Leaflet

A lightweight set of tools for using ArcGIS
services with Leaflet.

Examples

API Reference

Download

Terms

The background is a dark blue gradient with a faint, light blue isometric grid pattern. In the bottom-left and top-right corners, there are clusters of 3D isometric cubes in various shades of blue, some appearing to float or be part of a larger structure. The text "Career Opportunities" is centered in the upper half of the image.

Career Opportunities

<https://www.esri.com/en-us/about/careers/student-jobs>



STUDENTS AT ESRI

INNOVATION, COLLABORATION, PROFESSIONAL AND PERSONAL GROWTH

Whether you are looking to gain hands-on experience to add to your résumé or you're ready to launch your career, you'll find this and much more at Esri.

New Grads

Internship Program

Student Assistantship Program

30 POSITIONS

Job Category

CAREERS HOME

JOB SEARCH

RECRUITING EVENTS

STUDENTS & GRADS

BENEFITS



<https://community.esri.com/community/esri-young-professionals-network>



[Products](#)

[Industries](#)

[About](#)

[Support](#)



[Sign In](#)

GeoNet

The Esri Community

[Home](#)

[My News](#)

[Browse GeoNet ▾](#)

[Communities ▾](#)

[ArcGIS Ideas](#)

[GeoNet Resource Hub](#)

[Log in](#)



[All Places >](#)

Esri Young Professionals Network

[Actions ▾](#)



[Overview](#)

[Esri UC](#)

[FedGIS](#)

[Regional Events](#)

[Activity](#)

[Content](#)

[People](#)

[Subspaces](#)

[Calendar](#)

<https://community.esri.com/groups/geodev>







Esri GeoDev

@EsriGeoDev · Follows you

For our unique GeoDev friends, a special Twitter account. We hope to meet you at a [#GeoDev](#) Meetup, tech conference, hackathon or the [#DevSummit](#).

 Redlands, CA

 developers.arcgis.com

 Joined August 2010

Tweet to

Message

Tweets

Tweets & replies

Media



Esri GeoDev @EsriGeoDev · 20h

Our first presentation for tonight's [#GeoDev](#) [#Meetup](#) in [#Portland](#) [#Maine](#): Designing for enterprise- an Esri case study by Steven Nelson - UX/UI Manager - Software and Dawit Elias- UX architect (Android) [#UXUI](#)



Who to follow · Refresh · View all



ArcGIS Enterprise @ArcGI...
[Follow](#)



Amy Niessen @AmyNiessen
[Follow](#)



Esri Globe @EsriGlobe
[Follow](#)

@EsriGeoDev

[Industries ▾](#)[Products ▾](#)[Support & Services ▾](#)[About ▾](#)[Community ▾](#)

Support

[Contact Support](#)

USA +1-888-377-4575

[Products ▾](#)[Knowledge Base](#)[Downloads](#)[Other Resources ▾](#)[Manage Cases](#)[Request Case](#)[Start Chat](#)

Desktop >

ArcGIS Desktop

Industry Focused Extensions

Data and Workflows Extensions

Enterprise >

ArcGIS Server

Server Components

Portal for ArcGIS

and more...

Online >

ArcGIS Online

Developers >

Web APIs

Native Runtime SDKs

ArcGIS Engine

and more...

Apps >

Web Apps

Mobile Apps

Plug-in Apps

and more...

More Products >

Business Analyst

Esri CityEngine

Content

and more...



Contact Tech Support

Please select a country/region

United States ▼

Esri Headquarters

380 New York Street
Redlands, CA 92373-8100

✉ Email support@esri.com

☎ Phone +1-909-793-3774

☎* Toll-free +1-888-377-4575

☎ Fax +1-909-792-0960

🌐 Website <http://support.esri.com>

📄 Support Web Form <http://support.esri.com/en/webform>

Developers

Web APIs

[ArcGIS API for JavaScript](#)

Native Runtime SDKs

[ArcGIS Runtime SDK for .NET](#)

[ArcGIS Runtime SDK for Android](#)

[ArcGIS Runtime SDK for iOS](#)

[ArcGIS Runtime SDK for Java](#)

[ArcGIS Runtime SDK for macOS](#)

[ArcGIS Runtime SDK for Qt](#)

[ArcGIS Runtime SDK for Windows Mobile](#)

ArcGIS Engine

[ArcGIS Engine](#)

[ArcGIS Engine for Linux](#)

Desktop SDKs

[ArcGIS Explorer SDK \(.NET\)](#)

[ArcGIS Pro SDK \(.NET\)](#)

[ArcObjects SDK \(.NET\)](#)

[ArcObjects SDK \(C++\)](#)

[ArcObjects SDK \(Java\)](#)

Web AppBuilder for ArcGIS (Developer Edition)

[Web AppBuilder for ArcGIS \(Developer Edition\)](#)

Scripting and Automation

[ArcGIS Python API](#)



Geomentoring



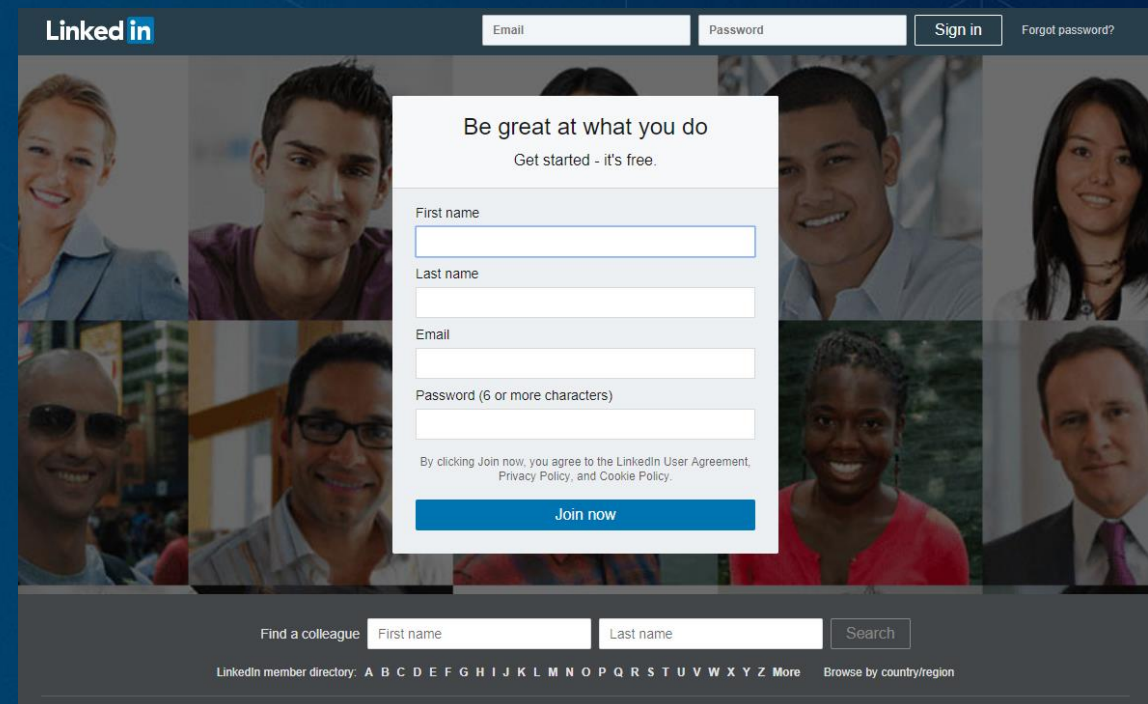
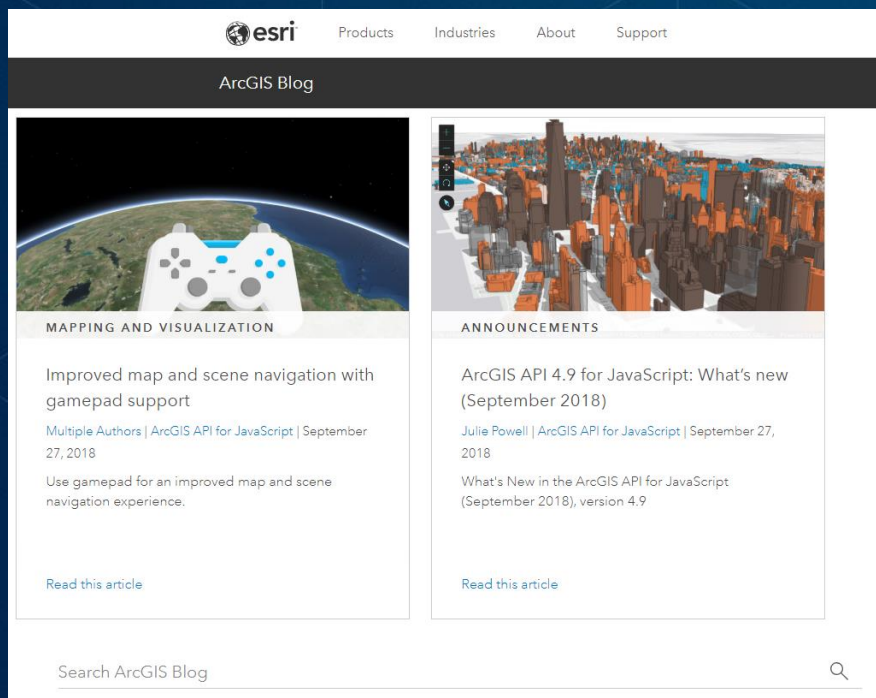
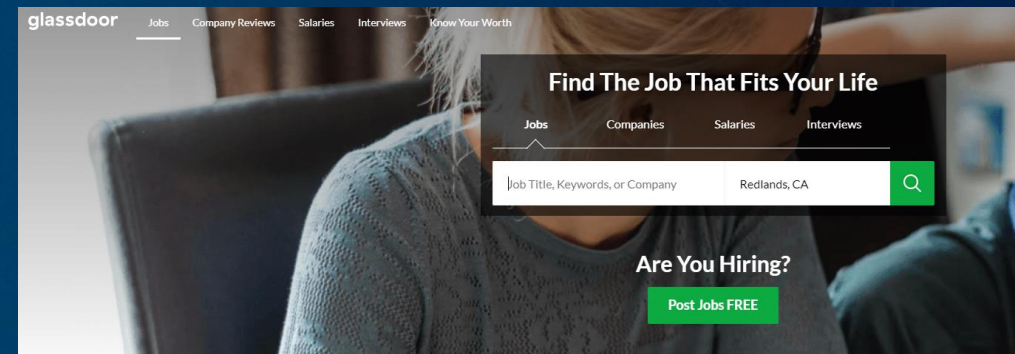
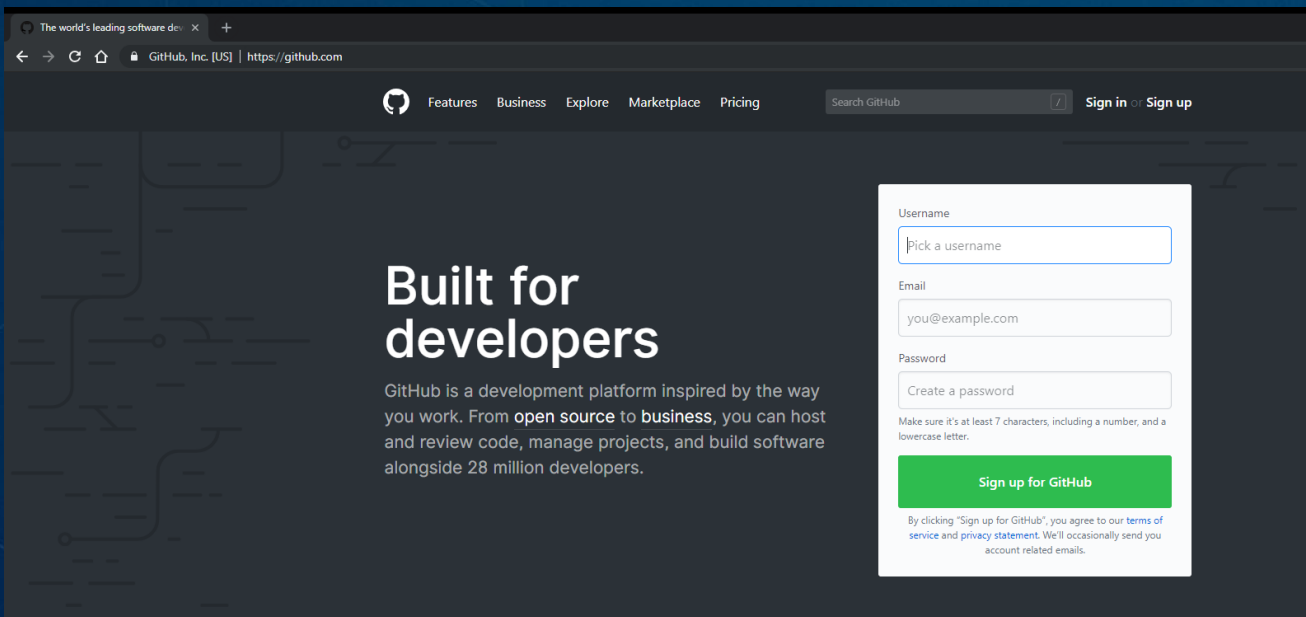
Hackathons



Outreach



Unsolicited Advice





Thank you!

Questions?

@noashx

nsager@esri.com